

# Newsletter

SPRING  
2019



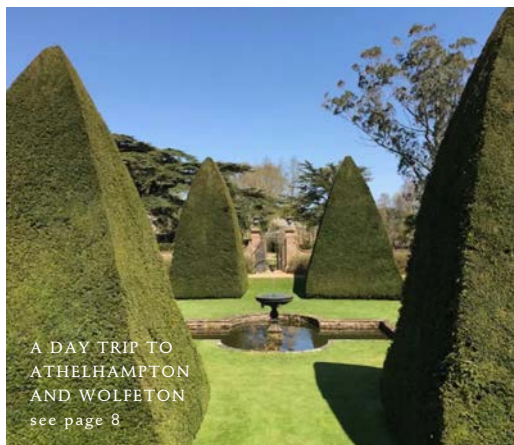
NEW EXHIBITION: GEORGE SHAW -  
*A CORNER OF A FOREIGN FIELD*  
see page 4



NORTHUMBRIA TRIP:  
*THE LAND OF THE  
PRINCE BISHOPS*  
see page 18

## THE HOLBURNE MUSEUM

CHANGING LIVES THROUGH ART



A DAY TRIP TO  
ATHELHAMPTON  
AND WOLFETON  
see page 8

DAME EMMA KIRKBY  
SINGS AT THE HOLBURNE  
see page 10



## Contents and calendar of events

	Antonia's letter and message from Chris Stephens	3
<b>2019</b>	<b>Future events</b>	
Thursday 7th February 2019	Invitation: Exhibition Circle and Patrons' Private View	4
Friday 8th February 2019	Invitation: Friends' Private View	4
Sunday 17th March 2019	Bath Half Marathon: support Team Holburne!	5
Wednesday 27th March 2019	A day in Bristol: the Cathedral and Leonardo drawings	6-7
Wednesday 3rd April 2019	Dorset medieval gems: Wolfeton and Athelhampton	8-9
Wednesday 1st May 2019	Frank Brown: an evening of music and celebration	10-11
<i>see page 12 for dates</i>	Exhibition Circle and Patrons' exclusive events	12
Sunday 12th May 2019	The Holburne Plant Sale 2019	13
Tuesday 14th May 2019	Severn Valley manor houses: Hardwicke and Whitminster	14-15
Monday 17th June 2019	A day at Bowood	16-17
19th-22nd September 2019	A trip to Durham and Northumberland	18-19
	A brief round-up of past events	20
	Museum Profile: introducing Kate Vantor	21
	Supporting the Holburne in 2019	22-23
	A special message from Amina Wright	23
	Holburne Supporters Committee/cover captions	24

## Membership matters

Thank you to those who have promptly changed their Standing Orders to Direct Debits, but we need more of you to do this now, even if your subscription is not due for a few months. So please do respond as soon as you can – either by requesting another direct debit form, or completing the relevant part of the Joining form at the Museum.

Please note that from now on the administration of Friends' subscriptions will be looked after by staff at the Museum

as part of our move to bring the Friends and the Holburne together as one charity. This will be my final message to you all, although I will continue to help behind the scenes for several months yet. But from now on your contact for all membership matters will be Oliver Merchant (Ollie). He is based at the Museum, and you can contact him via the **new** Friends email address: **friends@holburne.org**

For information about Friends' events, you will still need to contact the event organiser directly, as named in the current Newsletter.

Finally, those who have known Amina Wright over her 17-year stint as Senior Curator at the Holburne may like to know that she is now an Honorary Life Friend, so we hope to see her in the Museum from time to time. Do read her special message to Friends on p.23.

*Undine Concannon, Honorary  
Membership Secretary*

## Antonia's letter, and message from Chris Stephens

*Dear Friends and Patrons,*  
It has been wonderful seeing so many of you at events over the year, and the Friends have raised over £50,000 for the Museum in the course of 2018, quite an achievement. Despite the changes to the Friends in constitutional terms, the committee will continue to organise all our regulars - the Plant Sale, the Frank Brown celebration, the Robertson Lecture and the Quiz, as well as a goodly range of other trips both within coach distance of the Museum and further afield; all supporters of the Museum welcome.

This year my husband Simon (Quizmaster for some years, but now retired and replaced) has been persuaded to lead a tour of the North East, *the Land of the Prince Bishops*, and our daughter will be running in the Bath Half supporting the Museum: the Johnsons doing their bit.

Would any of you reading this like to be more involved? We would love to recruit a couple

of new members to plan events where Friends and Patrons can meet and raise money for the Holburne and its exciting programme. Our Committee is represented on the Board of the Museum (currently by myself) which underlines the close working relationship we have with the staff, and the value they place on their supporters. Come and join us!

I wish everyone a Happy New Year, *Antonia Johnson,*  
*Chairman of Friends & Patrons*

### Message from Chris Stephens

Wow! 2018 was quite a year. For sure, it had its challenges but I hope you found plenty to excite and delight you in our programme of exhibitions and events.

And what a year we have ahead of us. If you don't know the work of Turner Prize nominee George Shaw I can promise that you will be delighted by its craftsmanship and beauty. George will be contributing to several events

and we have a number of important speakers coming in relation to our display *Why Museums Matter*, including V&A Director Tristram Hunt and artist Sonia Boyce.

Later in the year we have a busy summer with Édouard Vuillard (to my mind one of the most beautiful painters, ever) in the Roper Gallery, children's author Lauren Child, and *Forest of Imagination* in the garden. In the autumn you will be able to compare two of the greatest print-makers of all time as we have parallel shows of etchings by Rembrandt and Matisse.

Your support was invaluable last year as we introduced major changes to the way we operate, how our Patrons and Friends are organised, and much more. Thank you for sticking with us, friends indeed. With your continued help and engagement, and the programme we have to offer, I think we can be sure of a very Happy New Year.

*Dr Chris Stephens*  
*Director of the Holburne*



Far left, photograph of Antonia Johnson  
© Jonathan Davis  
left, photograph of Chris Stephens  
© Clare Green

You are invited to a private view of the new exhibition:

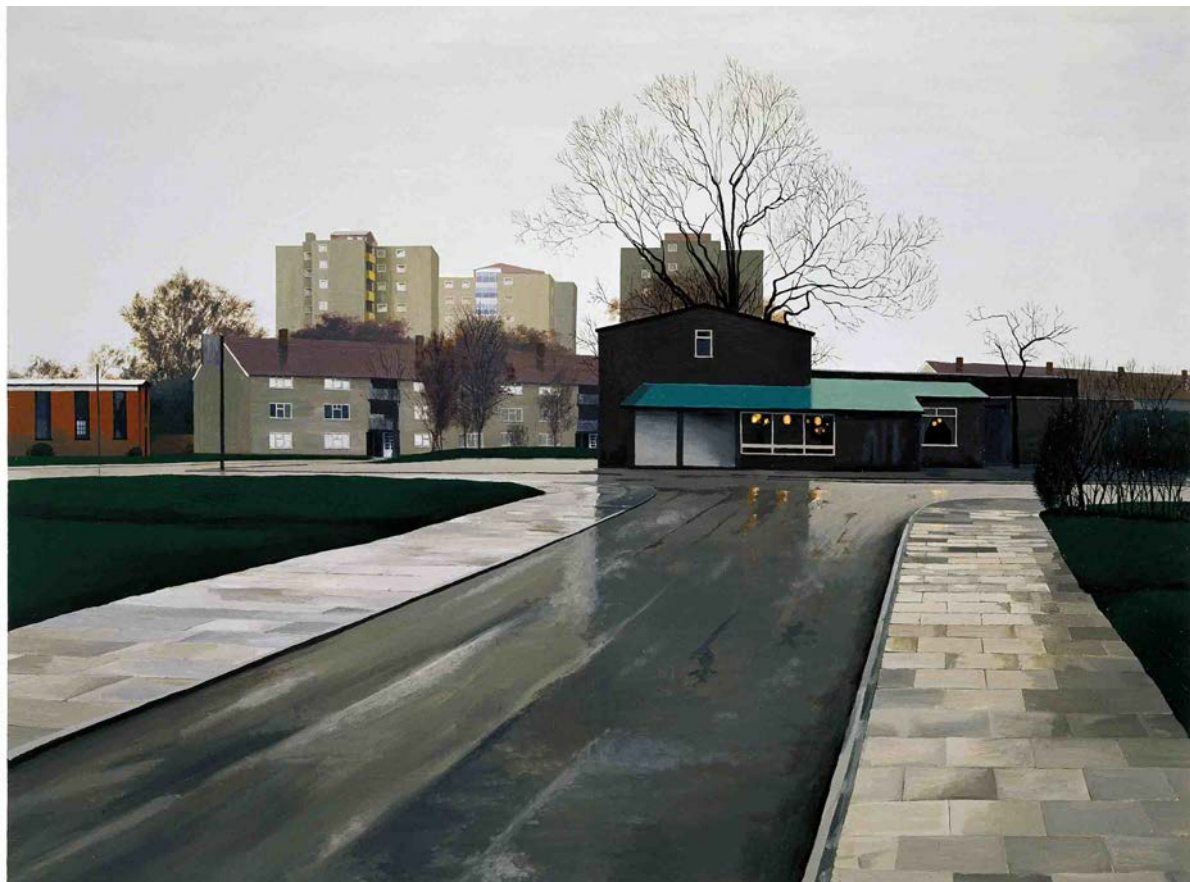
# George Shaw

A Corner of a Foreign Field

**Exhibition Circle and Patrons' Private View**  
Thursday 7th February 2019 6-8:30pm  
Introduction by George Shaw 6:15pm

**Holburne Friends' Private View**  
Friday 8th February 2019 6-7:30pm  
Refreshments in the Ballroom

*Exhibition Circle and Patrons are also invited to attend this private view if the date is more convenient.*



George Shaw (1966 - )  
*Scenes from the Passion: The Black Price* 1999, Humbrol enamel on board  
© George Shaw, image courtesy of Anthony Wilkinson Gallery, London,  
photo by Peter White

The exhibition will be on view in the Roper Gallery on the 2nd floor, from 8th February to 6th May 2019



## Bath Half Marathon: support **Team Holburne!**

This spring Friends Committee member Olivia Eliot will be competing in the Bath Half to raise essential funds for the Holburne Museum.

On **Sunday 17th March 2019**, Olivia and the rest of Team Holburne will be braving the spring weather and running or walking 13.1 miles around Bath to raise funds for the Holburne's Learning and Outreach programmes, from our work with local schools to our flagship programme *Pathways to Wellbeing* for those who've experienced homelessness, mental health issues or social isolation.

Olivia will be joined by Friends Chairman Antonia Johnson's

daughter Bea, Holburne staff Ollie Merchant and Abi Godfrey, and other volunteers and supporters of the Museum.

The great news is that you can support us as we train for a half marathon through the dark wet winter months by making a donation. We would really love to raise as much as possible.

You can donate online here <https://uk.virginmoneygiving.com/Holburne> or send in a cheque made payable to 'The Holburne Museum' (please write Bath Half Team on the back).

You can also show your support by coming down to cheer on the day. As the

Holburne is (almost!) at the start and finish of the race, our cheering point will be right outside the Museum.

Further details will be available at: <https://www.holburne.org/bath-half-2019/>.

Team Holburne still has 5 spaces to fill, so if you feel like joining a dedicated group for an amazing challenge, please get in touch with Ollie Merchant by email [o.merchant@holburne.org](mailto:o.merchant@holburne.org) or telephone 01225 388545.

Thank you for your support!



## A day in Bristol: the Cathedral & Leonardo drawings

### Wednesday 27th March 2019

To mark 500 years since Leonardo da Vinci died, the Royal Collection is touring a selection of his finest drawings from the Royal Library at Windsor. Displays of Leonardo drawings are being held simultaneously at 12 venues across the land, with 12 superb drawings on display at Bristol's Museum and Art Gallery, demonstrating his genius and artistry.

The works have been carefully selected to show the extraordinary scope of the artist's interests, from painting and sculpture to engineering, zoology, botany and anatomy, as well as his use of different media - pen and ink, red and black chalks, watercolour and metal point. These drawings are among the most diverse and technically accomplished in the history of art, and this exhibition is a rare chance to see them close-up. Our group will also have a private talk from a museum curator about the Leonardo exhibition, and the galleries' art collections.

The Bristol Gallery also has an important group of around 500 'floating world' (ukiyo-e) prints which celebrate the pleasures of life in Japan; the collection ranks among the top 5 of its kind in the UK.

Some of these superb examples will be in a special display, *Masters of Japanese prints: Life in the city*, with original wood-block prints.

The rare and colourful prints, which were, specially conserved and re-mounted for this show, allow a glimpse into urban life, both elegant and earthy, in Tokyo over 250 years ago. The exhibition explores how artists developed finely coloured prints with sophisticated effects to satisfy demand for city views from the wealthy merchants of Tokyo, or Edo as it was called in the 18th century.

Prior to visiting the gallery, we will have a morning to explore the glories of Bristol Cathedral, one of England's great medieval churches. The origins of the church date back to around 1140 when a prominent local citizen, Robert Fitzharding, founded an Augustinian Abbey. The Chapter House is a stunning Romanesque gem, dating from c.1160 - one of the most important of its era in the country. Carvings of beasts playing at being humans adorn the exquisite Lady Chapel, which was added c.1220.



Kitagawa Utamaro (c.1753/4-1806)  
*Beauty with a Hand Towel* (or *Woman of Good Character*), c.1802-04, coloured woodblock print on paper © Bristol Culture

The central nave at Bristol Cathedral.  
Photograph courtesy of Bristol Cathedral.



## A day in Bristol: the Cathedral & Leonardo drawings continued

Nikolaus Pevsner described the east end of the Cathedral as “superior to anything else built in England and indeed in Europe at the same time”. It is one of the finest examples in the world of a medieval ‘hall church’, with vaulted ceilings in the nave, choir and aisles all at the same height. Further additions and alterations were inevitably made over the following centuries, including a fine Gothic nave designed by GE Street in 1868, and the French Rayonnant-style west front with twin bell towers were completed by JL Pearson. The 20th century saw a new organ installed in 1907, windows by Arnold Robinson in 1940-50, and an abstract window, designed by Keith New, installed in 1965.

---

### **Exhibition Circle and Patrons exclusive one-week priority booking period**

As this visit promises to be very popular, Patrons and members of the Exhibition Circle can take advantage of the priority booking period *before* tickets are available to Friends. For these tickets, please contact Oliver Merchant on [o.merchant@holburne.org](mailto:o.merchant@holburne.org) by Thursday 31st January.

---

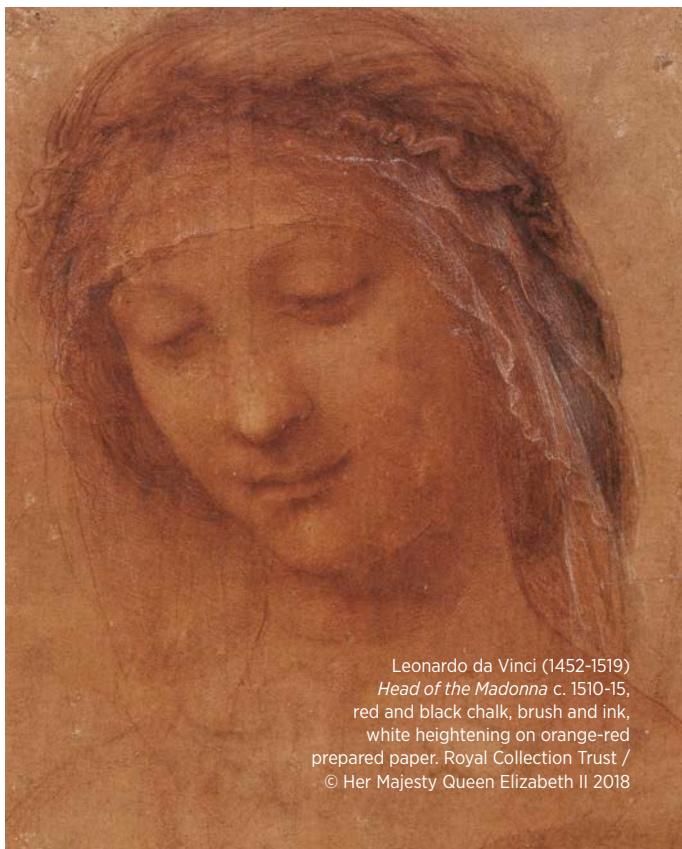
### **For Friends tickets**, available from Friday 1st February 2019, please complete and return **booking form 1**.

Tickets are £70.00 each, to include private return coach transport from the Holburne Museum (departing at 8:30am, returning around 6pm), a private guided tour of Bristol Cathedral, exclusive curator talk at Bristol Museum and Art Gallery, a simple lunch of sandwiches and soup at the museum (drinks not included), and exhibition tickets to the Leonardo show.

There is a small café at the Cathedral, with refreshments available on a first-come, first-served basis (not included in ticket cost).

If you would like to park at nearby St Mary's Church, Darlington Street, for the day please add £5 to your payment and tick the box on the booking form.

This trip is being organised by Jonathan Davis.



Leonardo da Vinci (1452-1519)  
*Head of the Madonna* c. 1510-15,  
red and black chalk, brush and ink,  
white heightening on orange-red  
prepared paper. Royal Collection Trust /  
© Her Majesty Queen Elizabeth II 2018



## Dorset medieval gems: Wolfeton and Athelhampton

### Wednesday 3rd April 2019

A full day trip to see two of Dorset's finest medieval properties. We will have private access and an exclusive tour of the interior of Wolfeton, and a private tour of Athelhampton.

We arrive first at Wolfeton House (shown below left), a Grade 1 listed medieval and Elizabethan house, whose original courtyard section dates back to 1480. Two magnificent early 16th century bastion towers flank a gatehouse; one tower houses a chapel, the other an unusual cantilevered spiral staircase. Only the south range of the original two courtyards now stands, as well as the country's earliest remaining indoor riding school, dated to c.1600.

Wolfeton's interior has grand fireplaces, magnificent carved oak panelling, splendid plaster ceilings and a unique stone

great stairs - up which a horse and carriage were once driven!

There are also fine pictures and furniture from the 17th century. The Great Hall survives from the original building, and although heavily "Victorianised", includes more panelling and a magnificent doorcase. There are fragments of Tudor carving as well. Perhaps the two most outstanding rooms are in the Elizabethan wing, with some components transferred here when other parts of the house were demolished - superb plaster ceilings depicting wild animals and native American Indians, finely carved overmantels and doorcases and imposing fireplaces.

Upstairs, we find the Great Chamber, dated to the late 16th century, with a huge fireplace, yet more elaborate carvings and views out over the gardens.

Wolfeton's unusual place in history was the visit in 1506 by Philip of Austria and his wife, Joanna "*The Mad*", seeking refuge from a storm which drove their ship ashore in nearby Weymouth.

In the afternoon we visit Athelhampton House (shown below right), a magnificent medieval property. Originally built by a wealthy merchant, William Martyn, in 1485, the west wing being added 50 years later. For much of the 17th century the house was jointly owned and occupied by four sisters, who did little by way of alteration. It was not until the late 19th century, when Alfred Cart de Lafontaine acquired the property, that any real conservation took place - he also laid out much of the gardens as we see them today. In 1957 the local Cooke family acquired Athelhampton, and they remain owners and occupiers to this day.





## Dorset medieval gems: Wolfeton and Athelhampton continued

The most impressive feature of the house must surely be its Great Hall, with its minstrels' gallery, armorial glass and stunning ceiling of carved wooden beams and elaborate corbelling. There is linenfold panelling, on part of which is hung a fine tapestry. Leading off the bay is the King's Ante-room which in turn takes the visitor through to the Great Chamber with its three large mullioned windows in the west wing. Within the west wall, a hidden spiral staircase leads to the floor above, and to a small cellar below. Was this to conceal Catholic priests during the Reformation, or did it merely provide convenient between-floors access?

An interesting newel staircase - all stone in its lower flights, changing to solid oak slabs higher up - leads from the ante-room up to the library cum billiard room. The library houses the recreational needs

of Edwardian owners - a grand Riley Imperial billiard table - and of the present owner's father, Sir Robert Cooke - bookcases to hold 3,000 volumes on furniture, history, architecture etc. Carved on the library's stone portal are the intriguing words "*Once I loved no one but one, then I loved M*" and the date 1660. Many of the more recent furnishings and wallpapers in the house have been derived or inspired by Augustus Pugin, whose work Sir Robert Cooke greatly admired.

In the gardens, which are Grade 1 listed, is one of Athelhampton's most famous features, its unique topiary Great Court of giant yew hedges and 12 pyramid-shaped yew trees; there are also water features aplenty - fountains, lily ponds, lakes - as well as statuary, dovecotes, walled "hidden gardens" and a magnificent cedar tree.

Thomas Hardy was a frequent visitor to Athelhampton, and so enamoured was he of the place that it is immortalised as "Athelhall" in two of his poems.

Tickets are £70 each to include return private coach transport, light refreshments at Wolfeton, a light lunch at the Martyrs Inn in Tolpuddle, and private tours of both properties. There will also be some free time at Athelhampton to explore its delightful gardens.

If you would like to park at nearby St Mary's Church, on Darlington Street, for the day please add £5 to your payment and tick the box on the booking form. The coach will leave the Museum promptly at 8.30am, returning at about 6.30pm.

### **Please complete booking**

**form 2.** Please indicate any food allergies/intolerances on the form. The trip is being organised by Mark Hake.



## Frank Brown: an evening of music and celebration

### Wednesday 1st May 2019 7pm

Richard Frewer writes:

We are delighted to announce that Dame Emma Kirkby has kindly agreed to join Nathaniel Mander and Sam Brown on May Day 2019 to give us an evening of fine music to celebrate Frank Brown's very special contribution to our Museum.

It is fair to say that without Frank's legacy at a critical time for the Holburne, its rebirth might never have been achieved. I was the University Holburne Trustee in the 1990's when the Museum was facing closure and we were considering the future of the collection seriously. Frank's legacy contributed greatly to the work necessary to apply

for the grants which started the process of renewal.

Emma Kirkby has a close connection with Bath. She spent part of her childhood here, and her father had some involvement in Bath University after his retirement from the Royal Navy. She knew Frank through his championing of music in the City and in the University. She has sung in Bath many times and when Bath University awarded her an honorary degree, I had the pleasure of delivering the oration and presenting her to the Vice-Chancellor.

There are some very special links in this story which, through serendipity, seem to resolve themselves in this

evening. Many of you will remember that the first Frank Brown Celebration took place in 2014. I was asked to arrange it and I called on the help of an old friend, Christopher Hogwood who, until illness intervened, was to have introduced Nathaniel Mander and The Holburne Ensemble.

As a fresher oboist in Cambridge, one of my first concerts was at the University Music Club where I played Handel Trio Sonatas with David Thomas, (cello), and Christopher Hogwood, (harpsichord). David was a Kings College Choral Scholar who I knew through the National Youth Orchestra; afterwards we both read Architecture at Cambridge.



Emma Kirkby giving a masterclass at Somerville College Chapel in Oxford in 2016.

Photograph courtesy of TORCH, The Oxford Research Centre for Humanities.

## Frank Brown: an evening of music and celebration continued

The young sophisticate, Christopher Hogwood, even at the age of eighteen, was totally confident and seemed familiar with all that there was to know about harpsichords; a young blade clearly heading for stardom. With the encouragement of musicologist Thurston Dart, it was Hogwood together with another brilliant contemporary, David Munrow, who pioneered period musical performance in the mid 1960s. It fell to Emma Kirkby and David Thomas, James Bowman and others to make many of the influential early music recordings.

I was not involved in their music making but, at the very beginning the 'Early Music Consort' (Munrow,

Hogwood and Bowman) used to rehearse in a house I shared with contemporaries near Sloane Square. When we all went out to work...they all came in...so you can see that for me this event, as well as being for dear Frank, is a celebration of the fruits of long and special friendships. Without that Cambridge Music Club freshers concert in 1960, there might have been no participation of two great young players, Nat and Sam, the core of our 'Holburne Ensemble', and certainly Emma Kirkby would not be joining us.

In summary, it was through Chris Hogwood that Nat was introduced to the Holburne. Later, with Nat

came his partner Sam Brown, who has performed with Emma before and is in great demand. Sam, a musician to his fingertips, has performed with Emma Kirkby before, and is in great demand ([sambrownmusic.org](http://sambrownmusic.org)). Nat's virtuoso playing has taken him all over the world and his reputation blossoms ([nathanielmander.com](http://nathanielmander.com)).

Don't miss this recital and the convivial Friends' party, with drinks and food that follows. Tickets are £30 each, to include the party. This event is being organised by Richard Frewer.

**Please complete the  
booking form no. 3  
for tickets.**



Sam Brown (left) photograph by Guy Watson,  
and Nathaniel Mander (right), photograph by David Percy.

## Exhibition Circle and Patrons' exclusive events

All these events are open to Holburne Exhibition Circle and Patrons. If you would like to come to any of these additional exclusive events, we invite you to join the Exhibition Supporters Circle or our Patrons; for details, please contact Camilla Johns, Head of Development, on [c.johns@holburne.org](mailto:c.johns@holburne.org) or call on **01225 388564**.

### Tuesday 5th February 2019

We invite Exhibition Circle members to join us for a visit to the installation of our new exhibition, *Why Museums Matter*. Meet the team behind the show and see a new contemporary artwork being installed in the Ballroom.

### Thursday 7th February 2019

Exhibition Private View with artist George Shaw. Please join us for the first view of our new exhibition *George Shaw: A Corner of a Foreign Field*, previously shown at the Yale Center for British Art in Connecticut.

This is an exceptionally rare opportunity to attend an introduction to the exhibition by the artist himself.

### Tuesday 19th February 2019 at 6pm

Drinks & nibbles: meet our new curator. In February we welcome Will Cooper as our new Curator of Contemporary Art & Special Projects. This new post is shared with The Edge at the University of Bath and generously funded for three years by the John Ellerman Foundation. Please join us to welcome Will and hear about his plans and ideas for the Museum in the future.

### Wednesday 27th March 2019

*Priority Booking* for Leonardo da Vinci at Bristol City Art Gallery & Museum. A chance to see the exhibition *Leonardo da Vinci: A Life in Drawing* with an introductory talk by a museum curator. The day begins with a guided

tour of Bristol Cathedral. Exhibition Circle members and Patrons enjoy a one week priority booking period for what promises to be a very popular trip. Tickets are £70 each to include return coach transport, a light lunch and exhibition tickets. Please see p.6 for further details.

### Tuesday 9th April 2019

Visit to George Shaw's artist studio in Devon. Join Director Chris Stephens for a very special visit to the studio of George Shaw, the artist behind our major exhibition *A Corner of a Foreign Field*. Space is limited on this trip to Dartmoor so please contact Camilla if you're interested in joining us.

### Thursday 23rd May 2019

Private View: save the date. Please join us for the very first view of our forthcoming exhibition *Vuillard: Poetry of the Everyday*, focusing on the first 10-15 years of the artists career.

### Monday 17th June 2019

Bowood House and Gardens; private access to the Walled Gardens, and guided tour of the house. Patrons enjoy a one week priority booking period for this visit. See p.16 for full details.



Left: George Shaw at work in his studio. Photograph courtesy of the artist.



# The Holburne Plant Sale 2019

**Sunday 12th May 10:30-2:30**

Come along to our annual plant sale, perfectly timed for summer planting-out. Keep fingers crossed for sunny weather like last year, ideal for our stallholders and those who enjoy tea, coffee and homemade cakes al fresco! We have our regular stallholders coming back, plus new nurseries too. Ironart of Bath have kindly supported the Plant Sale, although they can't join us this year.

## **Help needed, please**

Do please help us if you can, with seedlings, cuttings and donations of plants (labelled with the relevant info) for sale. Or bake some biscuits, or cakes to serve with teas and coffees, or help at the Friends' stalls or pop-up café.

If you can help with plants, please contact Antonia Johnson via 01761 470770 or help with catering, contact Sally Roche 01225 315706 or [sallyenroche@btinternet.com](mailto:sallyenroche@btinternet.com)

## **A list of our stallholders**

Holburne Friends - our own stall selling a wide range of quality plants and cuttings  
Holburne Friends books - a wide array of high quality gardening and cookery books  
The Mead Nursery  
Necia West Plants  
Wild Thyme  
In Clover  
Foxley Road Nursery  
Chase Plants  
Special Plants

All our lovely stallholders will happily answer your gardening queries and offer useful advice and expertise.



## Severn Valley manor houses: Hardwicke & Whitminster

### Tuesday 14th May 2019

A full day trip to see two of the Severn Valley's most enchanting private small manor houses. We are fortunate enough to have exclusive private access and tours of both properties. Lunch will be at the highly-regarded Old Passage Inn at nearby Arlingham.

Our first stop will be Grade 2 listed Hardwicke Court (shown below left), near Gloucester. Hardwicke is a late Georgian house designed by Sir Robert Smirke in the early 19th century. Old Hardwicke was apparently something of a rambling place, but what Smirke replaced it with was, and is, a beautifully proportioned villa in a spacious park

overlooking the Severn Valley. The facade comprises seven bays surrounding a central elegant single-storey porch.

The house is currently lived in by the sixth generation of Lloyd-Bakers. Among the rooms which we visit are the drawing room, library and dining room, containing many pieces of furniture and art original to the house. It is these which give the stately, understated neo-classical interiors their character and style. Mary Lloyd-Baker, née Sharp, who with her husband Thomas built Hardwicke, was the niece and heir of Granville Sharp, the noted abolitionist, and many of his possessions are still in the house - there is a magnificent portrait of him in the dining room.

The gardens are also open to visitors and there will be some time to stroll round.

Lunch will be at the Old Passage Inn, Arlingham, which specialises in fish and seafood. The Inn has a delightful location on a bend of the River Severn- there are lovely views across the valley. From here too, the famous "Severn Bore" tidal surges which attract surfers from across the globe, can be viewed at monthly high tides.

In the afternoon we visit Whitminster House (shown below right on page 15), also a Grade 2 listed property and a superb example of a family home that has evolved over the centuries. We will also be shown round the





## Severn Valley manor houses: Hardwicke & Whitminster

continued

village church which stands in the middle of Whitminster's 10 acres of grounds. The manor house dates from Saxon times and is mentioned in the Domesday Book. Various owners, including a succession of Earls, Dukes and Kings including Henry V, Edward IV and Richard III, it became the property of local notables in the 17th and 18th centuries. One of these, Richard Owen Cambridge, a friend of the poet Alexander Pope and of Frederick, Prince of Wales, created glamorous embellishments to the house and grounds which attracted many visitors. Although these outdoor improvements have not survived, the panelled library in the house's south west corner remains. It has an original fireplace and contains

a bookcase probably made in the early 19th century.

The south and west ranges contain large remodelled Victorian rooms with elaborate and unspoiled plaster cornices, those in the drawing room being especially fine. This room has original William Morris wallpaper from 1884, a white marble fireplace with complete inlay of Minton tiles probably from the late 1860s, as well as many original fittings such as fire screens which are probably contemporary and possibly designed for the room. The principal stairwell also has original 19th century wallpaper and elaborate plaster cornices.

Tickets are £70 each to include return private coach transport, light refreshments at Hardwicke, a 2-course lunch at the Old Passage Inn in Arlingham, afternoon tea at Whitminster and private tours of both properties.

If you would like to park at nearby St Mary's Church on Darlington Street, for the day please add £5 to your payment and tick the box provided on the **booking form no. 4**. Please also indicate any food allergies/intolerances on the form.

The coach will leave the Museum promptly at 8.30am, returning at about 6.30pm. The trip is being organised by **Mark Hake**.



## A day at Bowood

### Monday 17th June 2019

A full day trip to Bowood. We are fortunate enough to have exclusive private access to the walled gardens and private tours of the house and also the grounds, including the world-famous Capability Brown-designed parkland. Lunch will be at the Stables restaurant on site.

Bowood is the home of the Marquis and Marchioness of Lansdowne, and has been in the same family since the mid 18th century. Now a hotel, golf club and spa as well as a working farm, Bowood is a reflection of the upheavals and challenges that have faced many privately-owned estates in this country.

Bowood House as it stands today may be only a shadow of its previous incarnation - the so called Robert Adam "Big House" was demolished in 1955, one of a vast wave of country houses swept away in the social, political and cultural revolutions of the post WW2 years - but the "Little House" that we will see today still offers treasures aplenty. Adam's orangery houses an art gallery displaying a collection of old master paintings and drawings as well as more contemporary work.

In the middle of the orangery, somewhat incongruously, stands the Chapel, designed by CR Cockerell. The current

chamber organ was installed in 2004. At one end of the Orangery is another example of Cockerell's work, a neo-classical library, converted from a surviving Adam room in the early 19th century, and home to over 5,000 books acquired by the 3rd Marquis.

At the other end of the Orangery, large Adam doors (also rescued from the "Big House") lead into a tapestry and sculpture gallery originally designed as a small zoo! There is also an ante-room off the library which was once a small laboratory and study, where one Dr. Joseph Priestly, tutor to the 1st Marquis's two sons, discovered oxygen in 1774.





## A day at Bowood continued

Bowood has 100 glorious acres of gardens and grounds. We will have a private and exclusive tour of the walled garden, covering four acres with a profusion of colour, fragrance and “vertical” gardening up the high brick walls. It is divided into four separate and distinct areas - greenhouses, formal borders, a “picking” garden and kitchen garden. Close by are the Italian-inspired terrace gardens, over two levels with fountains, stone balustrades, decorative box hedging, and formally planted beds.

The beautiful herbaceous east borders afford fine views out across to the mile long

lake and its Doric temple, set within the famous Capability Brown parkland of flowing plantations and sweeping lawns. Brown was probably at his career high when he came to Bowood and transformed its gardens, between 1762-1768. Brown also laid out the arboretum which stands behind the walled gardens, and which contains some 700 different species of trees and shrubs as well as 11 champion trees - the largest or tallest of their kind in the country. The adjoining Pinetum was established in 1849, the trees planted in a pattern to reflect their original country of origin.

Tickets are £70 each to include return private coach transport, light refreshments on arrival, a 2-course light lunch, afternoon tea and private tours of the house and gardens. If you would like to park at nearby St Mary’s Church, Darlington Street, for the day please add £5 to your payment and tick the box provided on the booking form.

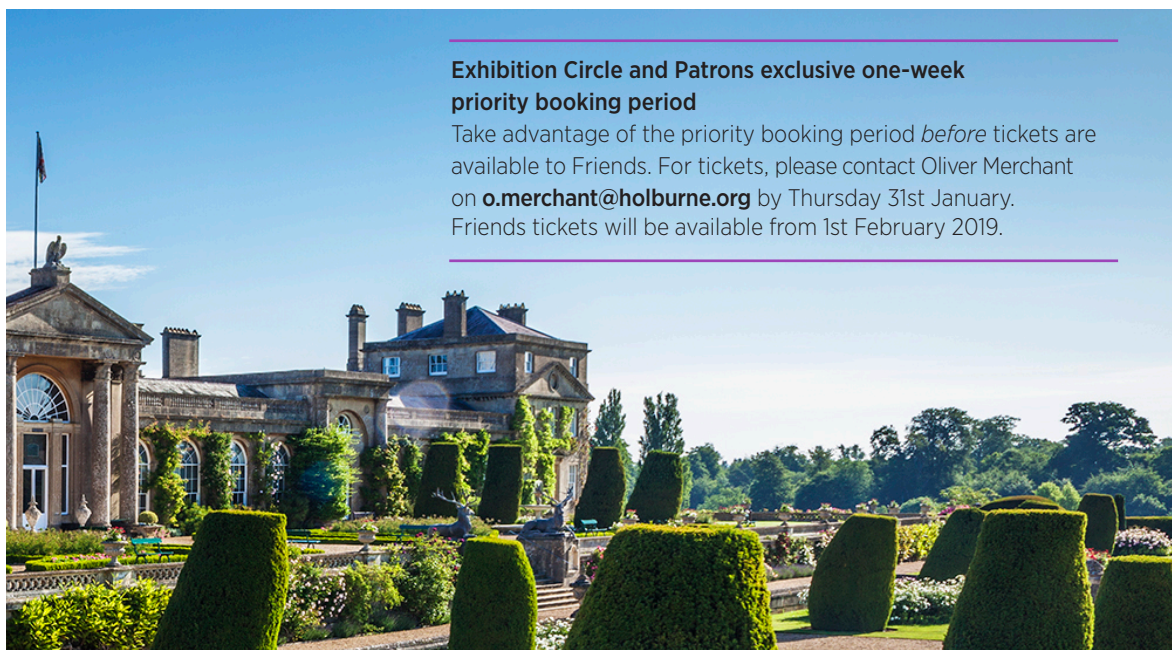
The coach will leave the Museum promptly at 9.30am, returning at about 6.00pm. Please complete **booking form no. 5**. Please indicate any food allergies/intolerances on the form. The trip is being organised by **Mark Hake**.

---

### Exhibition Circle and Patrons exclusive one-week priority booking period

Take advantage of the priority booking period *before* tickets are available to Friends. For tickets, please contact Oliver Merchant on [o.merchant@holburne.org](mailto:o.merchant@holburne.org) by Thursday 31st January. Friends tickets will be available from 1st February 2019.

---



## A trip to Durham and Northumberland: *the Land of the Prince Bishops*

**Thursday 19th - Sunday  
22nd September 2019**

We are planning a three-night trip to the North East in September. We will be based at the Royal County Hotel in Durham, and visit the Cathedral, one of the finest examples of Norman architecture and (with Durham Castle, which you will have time to visit too) a UNESCO World Heritage site. We will also go to the restored Bishop's Palace at Bishop Auckland, where

the Zurbarán series, saved by Jonathan Ruffer, are once again hanging; to Hexham Abbey and on along Hadrian's Wall to Vindolanda Roman Fort and Museum; on our last day (possibly, all programmes are subject to change) we will visit the Castle at Alnwick, and the extraordinary, extravagant gardens created by the Duchess of Northumberland working with the late Jacques Wirtz and his son Peter.

The estimated price of £599 per person includes return flights from Bristol to Newcastle, 3 nights b&b at the Royal County Hotel (single room supplement £30 per night), one group dinner, coach transfers and museum entry fees. Deposits of £125 (per person, non-refundable) due by 30th March. If you are interested in joining this trip, please let us know via **booking form no.6** or [holburnefriends@gmail.com](mailto:holburnefriends@gmail.com), and we will send you the full brochure and booking details.

Left, the west towers, dating from the 12th-13th centuries and right, interior of Durham Cathedral, both photographs © Jonathan Davis



## A trip to Durham and Northumberland: *the Land of the Prince Bishops* continued



This is one of the famous series of paintings, displayed at Auckland Castle for over 250 years, *Jacob and his Twelve Sons*, by Zurbarán. The paintings were rescued by philanthropist Jonathan Ruffer in 2012 after being put up for sale by the Church of England. Ruffer was brought up in the North East and hopes the centre for religious art he is supporting will help regenerate the impoverished region.

While Auckland Castle was undergoing renovation, the paintings were sent to the US for detailed technical analysis and research conducted at the Kimbell Art Museum in Fort Worth, Texas. The paintings were then exhibited at the Meadows Museum in Dallas and the Frick Collection in New York.

In 2019, the paintings will be back on display in the Castle's dining room which was specially built for them when they were acquired by the then Prince Bishop Richard Trevor in 1756.

Francisco de Zurbarán (1598-1664)  
*Jacob* 1640-45, oil on canvas  
© The Auckland Project/Zurbarán Trust,  
photograph by Robert LaPrelle



## A round-up of some recent events

### Kelmscott and Buscot visit

First stop: Kelmscott Manor, the beloved 'heaven on earth' of William Morris and home to a wonderful collection of art and furniture including pieces by Burne-Jones, Philip Webb and a splendid group of Dürer prints. A tasty lunch was served in the courtyard before our next stop: Buscot Park, an 18th century house set in vast parkland. The curator gave us a lively talk about the gardens (with an incongruous set of replica terracotta warriors)! Inside, ornate rooms display the Farringdon collection, with fine oils by Rembrandt, Rubens and Sickert. In the Saloon amid delicate plaster-work and fine furniture, is the famous Burne-Jones series, *The Legend of the Briar Rose*, in gilded frames designed by the artist. A jolly fine day out, deftly organised by Mark Hake, thank you! *Sue McEvoy*

### Vienna – October 2018

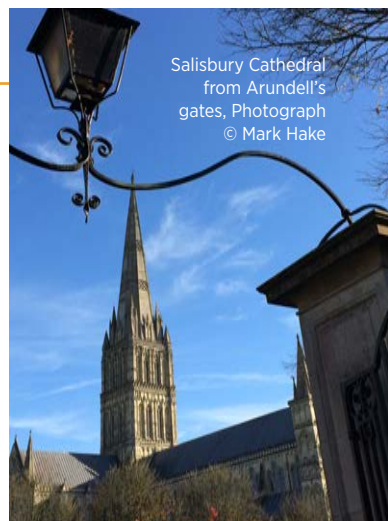
Vienna has recently been voted the most desirable place to live (London: 41st) and, after 4 days of sunshine and

the comforts of the Hotel Bristol, our group had no cause to question its ranking. We got a good grasp of the city and enough Hapsburg history to know how Vienna became a great hub of culture, emphasised by our visit coinciding with sensational exhibitions, including the 'once-in-a-lifetime' Bruegel show, and an outstanding production of *Les Troyens* at the Opera (conveniently next-door to our hotel). Lots of happy memories!

*Olivia Eliot*

### Vive la Différence – recital

The quiet passion of Strauss songs opened the concert, and, as ever, Richard Frewers' excellent diction and dynamic range was evident. Softer passages were beautifully balanced by accompanist David Price. After a sensitive rendering of Gerard Finzi songs, evoking English rural life, Britten's *O Waly, Waly* returned us to the deep-felt emotion of Strauss, and the jolly *Oliver Cromwell* brought the recital to a delightful upbeat ending. *Undine Concannon*



Salisbury Cathedral from Arundell's gates, Photograph © Mark Hake

### Salisbury day trip

We had an excellent guide for the Cathedral although she had to contend with the organ which was loud and gloomy - tuning up! The largest part of the cathedral, amazingly, was built in just 38 years, apart from the spire. One highlight, for me, was the Magna Carta - not at all what I expected; neat, closely written script on sheepskin parchment without any flamboyance. A remarkably 'ordinary' document considering its extraordinary effect. After lunch we visited Arundells, Ted Heath's former home - a beautiful house with gardens that run down to the confluence of the Avon and Nadder rivers where we saw egrets and a kingfisher. The house is full of neatly organised memorabilia, recalling Heath's love of yachting, musical talents and continued popularity with the Chinese! The art collection includes an enviable group of John Piper paintings in the dining room. *Janet Locke*



Fountain statuary at Schönbrunn. Photograph © Colin Clark



## Museum profile: introducing Kate Vador

Kate joined the Holburne team earlier in 2018; among her tasks is the rejuvenation of the Museum's gift shop.



**You studied art history at Manchester; what were your specialist subjects there?**

Once I had decided to do history of art at university, making a decision where to study proved to be quite easy. I chose the School of Art in Manchester because they shirked the traditional chronological approach, and offered an interesting and engaging syllabus including practical units and courses on professional practice. In the last year of the course, my written projects focused on the representation of gender in the photographs of the US Farm Security Administration and the significance of the Memphis Design Group on post-modernism. My final practical project was an homage to the *Museum of Drawers*, which I used to explore ways

of representing the idea of place and the identity of Manchester.

**You gained an MA in arts management at Bath Spa; what areas did you study?**

The MA provided me with a useful understanding of the creative industry including current policy and best practice for professional arts management. Having studied and lived in central Manchester for a few years, my first visit to the Newton Park campus was a bit of a shock to the system but I quickly learned to love Bath Spa's rural surroundings. As part of my MA I completed a placement at the Holburne. I researched and wrote online content for the *Silver* show in 2016, and helped co-ordinate the bespoke silverware which was part of the very successful Silver Shop.

**Tell us a little about your fellowship award with the Traverse Trust?**

Being selected as the Traverse Trust's Curatorial Fellow role has been an incredible opportunity, and working as part of such a dedicated team has been amazing. The fellowship was mainly about assisting with the planning and delivery of the *Bath to Baghdad* exhibition. It was great to

work on the display as it had received such strong public support and it was a privilege to help tell Miss Tanner's story. Since then I have been working on the legacy that the exhibition will have in the permanent collection. There will be a display of Persian textiles in the Posnett Gallery and we're considering a new home for the tiles which used to hang in the Café.

**With your experience in high street retail, how will you improve the Holburne shop?**

The shop has the potential to be a great retail destination in its own right. It's an exciting opportunity to work with artists and makers, and I hope to make it a more curated space, reflecting the collection and exhibition programme with creative and exciting stock.

**Do you have a favourite item in the Holburne collection?**

My favourite painting is the portrait of Don McCullin by Charlotte Sorapure. Not only has his portrait been very skilfully rendered but I think the textural application of the paint is wonderful. My favourite objects in the collection are the Mark Paillet silver tea bowl and saucer from 1700. Despite being over 300 years old they look really contemporary.

## Supporting the Holburne in 2019

Every year, even with monies from ticket admissions, we have to raise over £560,000 to support the Museum and all the exhibitions, learning projects, collection care and our Grade 1 listed building.

Help us to safely package, transport and display a wonderful collection of **18th century Bow porcelain** from the Pallant House Gallery in Chichester, which we are acquiring. The collection, which contains both early and rare pieces including teaware, sauceboats, frill-vases and figures, will cost £3,500 to transport and a further £2,000 to display. The more we raise, the more imaginatively we can display it!

Seagull activity has damaged the roof! We need to make some **urgent repairs** to our piping and insulation, costing over £2,500.

A gift of £3,000 will fully support our annual programme of free **workshops and fun days** for younger children in 2019, including our art and craft events at Easter, Halloween and Christmas.

We are always in need of your support, and you can help us this year by making a donation, however small or large, to one of the following important projects:

Bring to life one of our **major exhibitions** by supporting the cost of lighting the artwork, at a cost of £850 per exhibition.

£6,000 would enable us to buy all the **art materials** needed to run every one of our workshops for the year (over 500 classes!) for local schools, young people and vulnerable adults – from craft paper to pencils, PVA glue, paintbrushes, tissue paper, clay and more.

Help us to clean our beautiful **English chandelier** from 1790 in the Ballroom Gallery. We need to hire specialists at a cost of over £750 to individually clean all the fragile glass beads.

Please contact our Head of Development, Camilla Johns, on 01225 388564 or [c.johns@holburne.org](mailto:c.johns@holburne.org) for information on giving.

**Thank you** for any donations, however large or small, that you can give toward these vital projects.

### Museum news and notes

We are pleased to announce that our 2019 exhibition programme will feature British artist George Shaw, Édouard Vuillard, Matisse, Rembrandt, children's illustrator Lauren Child, contemporary craft and a community-inspired exhibition called *Why Museums Matter*.

The Holburne and The Edge at University of Bath are delighted to announce the appointment of Will Cooper as our new Curator of Contemporary Programmes & Special Projects, which is a new role funded for 3 years by the John Ellerman Foundation. Will is originally from Bath and joins us from the Gallery of Modern Art, Glasgow. He will work between both the Holburne and The Edge.

In 2018 we reached 12,661 local children and adults through our Learning & Engagement Programme with children, community groups, adults, families, and students.

Our wonderful team of volunteers also contributed over 38,000 hours of time to help us run our Museum and programmes – thank you so much to them all.

## Supporting the Holburne in 2019

continued

### Rembrandt prints

We are currently raising the funds to exhibit a selection of prints from one of the world's greatest collections of Rembrandt etchings.

*Rembrandt in Print* will be displayed in our Roper Gallery in Autumn 2019, and we are seeking the support of our Friends and Patrons in helping us to deliver this wonderful exhibition. Rembrandt is one of the greatest printmakers of all time, as well as being the recognised master of the Dutch golden age.

Unsurprisingly, Sir William Holburne owned numerous examples of the artist's etchings, though they were, more surprisingly, sold in his lifetime. The exhibition is

drawn from the Ashmolean Museum's collection and will include many of his most iconic images, including *The Three Trees* and *Self-portrait shouting* (below left). Several pieces have never been on loan before.

If you would like to make a donation to help us in transporting, lighting and displaying the exhibition, along with a learning programme for young people, please contact Camilla Johns, Head of Development, on telephone 01225 388564 or email [c.johns@holburne.org](mailto:c.johns@holburne.org), or send a cheque made payable to 'The Holburne Museum' to Camilla at The Holburne Museum, Great Pulteney Street, Bath BA2 4DB. *Thank you!*



Rembrandt Harmensz. van Rijn (1606-69)  
*Self-portrait shouting*,  
1630, Etching on  
laid paper  
© Ashmolean Museum  
WA 1855 320

A special message from  
Amina Wright

*Dear Friends, I would like to thank you all for your friendship and generosity over my 17 years at the Holburne. When I arrived in Bath in 2001, one surprise was to find a Friends' group who lived up to their name: you made me so welcome. I will take away so many happy memories of Friends' events at the Holburne.*

*I am very proud of the way that so many of you came forward to help to pack up the collection when we handed over to the builders in 2008, and then came back in 2011 to unpack. That was when I realised that we had the makings of an award-winning volunteer team. More recently, the voyages of discovery in the museum stores with winners of the prize draw has been a lovely way to explore the reserve collection and to make it known more widely.*

*Just as this is a time of change for the Friends and the Holburne, so it is for me. I will be staying in Bath at least for the coming year and am looking forward to completing my MA at King's College London. I am also delighted to be continuing my research on the early work of Thomas Lawrence, which will culminate in an exhibition at the Holburne in 2020.*

*Special thanks to the Friends Committee for all your kind wishes and for your generosity in making me a Life Member. I feel extremely honoured; having that magic card to wave whenever I approach the museum means I will always have a reason for coming back and knowing I am welcome.*

*With all good wishes and many thanks to you all, Amina*

# THE HOLBURNE MUSEUM

## Holburne Friends and Patrons Committee

Antonia Johnson,  
Chairman

Sidney Morton,  
Honorary Treasurer

Undine Concannon,  
Honorary Membership Secretary

Mary Jane Wilkinson,  
Honorary Secretary

## Committee Members

Jennifer Bereska, Deputy Treasurer

Jonathan Davis,  
Newsletter Designer and Editor

Mark Hake,  
Galleries, Gardens and House Tours

Kim De Morgan, Special Events

Olivia Eliot, Deputy Chairman and Foreign Tours

Richard Frewer,  
(former Holburne Trustee), Music

Tim Locke, Friends' Web Pages

Will Darby, co-opted member;  
Patrons' Representative

Do check our regularly updated pages on the Holburne website for news of events and visits etc:

**<http://www.holburne.org/support-us/friends-of-the-holburne-museum/>**

## The Holburne Museum

Great Pulteney Street, Bath BA2 4DB

The Museum is open daily:

10am to 5pm

Sunday and Bank Holidays:

11am to 5pm

Closed 24th to 26th December  
and 1st January

Admission charges:

Full price: £12.50 (£11.00 + £1.50 Gift Aid donation).

Concessions: Art Fund, NUS, 19-25 year olds £7.00 (£5.50 inc. £1.50 Gift Aid donation).

Groups of 10 or more: £11.50 each (£10.00 inc £1.50 Gift Aid donation).

**Free** admission from 3-5pm every Wednesday and 5-9pm on the last Friday in the month.

**Free** for 18 and under, Friends and Patrons, Staff and students from the University of Bath and Bath Spa University, adult accompanying a disabled visitor.

The Shop, Garden and Cafe are free to enter.

The Holburne Museum is registered charity number 310288

**[www.holburne.org/friends](http://www.holburne.org/friends)**

email: **[friends@holburne.org](mailto:friends@holburne.org)**

Printed by Emtone Print Limited

Front cover image captions:

Top left:

George Shaw (1966 - ) *Ash Wednesday: 8:30am*, Humbrol enamel on board 2004-05

© George Shaw, image courtesy of Anthony Wilkinson Gallery, London.

Photo: Peter White. Part of Ian and Mercedes Stoutzkers' gift to Tate

Top right:

View of topiary at Athelhampton

Lower left:

View of Hadrian's Wall

Photograph by Simon Johnson

Lower right: Dame Emma Kirkby, photograph by Allan Watson, courtesy of Rayfield Allied



**BOOKING FORM 1** BRISTOL/CATHEDRAL/LEONARDO

WEDNESDAY 27TH MARCH 2019

I/we would like ..... tickets at £70.00 each For parking at St Mary's Church, please add £5 .....

Name (s) .....

Address .....

..... Telephone .....

Email (or send stamped self-addressed envelope).....

Please send cheque, payable to the 'Friends of the Holburne Museum' to: **JONATHAN DAVIS**,  
HOLBURNE FRIENDS, c/o THE HOLBURNE MUSEUM, GREAT PULTENEY STREET, BATH, BA2 4DB

**IMPORTANT:** PLEASE WRITE A **SEPARATE** CHEQUE + **SEPARATE** ENVELOPE FOR EACH EVENT, THANKS**BOOKING FORM 2** WOLFETON & ATHELHAMPTON

WEDNESDAY 3RD APRIL 2019

I/we would like ..... tickets at £70.00 each For parking at St Mary's Church, please add £5 .....

Please indicate any food allergies or intolerances .....

Name (s) .....

Address .....

..... Telephone .....

Email (or send stamped self-addressed envelope).....

Please send cheque, payable to the 'Friends of the Holburne Museum' to: **MARK HAKE**,  
HOLBURNE FRIENDS, c/o THE HOLBURNE MUSEUM, GREAT PULTENEY STREET, BATH, BA2 4DB

**IMPORTANT:** PLEASE WRITE A **SEPARATE** CHEQUE + **SEPARATE** ENVELOPE FOR EACH EVENT, THANKS**BOOKING FORM 3** FRANK BROWN EVENING; CONCERT & PARTY WEDNESDAY 1ST MAY 2019

I/we would like ..... tickets at £30.00 each

Name (s) .....

Address .....

..... Telephone .....

Email (or send stamped self-addressed envelope).....

Please send cheque, payable to the 'Friends of the Holburne Museum' to: **RICHARD FREWER**,  
HOLBURNE FRIENDS, c/o THE HOLBURNE MUSEUM, GREAT PULTENEY STREET, BATH, BA2 4DB

**IMPORTANT:** PLEASE WRITE A **SEPARATE** CHEQUE + **SEPARATE** ENVELOPE FOR EACH EVENT, THANKS

I/we would like ..... tickets at £70.00 each For parking at St Mary's Church, please add £5 .....

Please indicate any food allergies or intolerances here .....

Name (s) .....

Address .....

..... Telephone .....

Email (or send stamped self-addressed envelope).....

Please send cheque, payable to the 'Friends of the Holburne Museum' to: **MARK HAKE**, HOLBURNE FRIENDS, c/o THE HOLBURNE MUSEUM, GREAT PULTENEY STREET, BATH, BA2 4DB

**IMPORTANT:** PLEASE WRITE A **SEPARATE** CHEQUE + **SEPARATE** ENVELOPE FOR EACH EVENT, THANKS

**BOOKING FORM 5** BOWOOD HOUSE AND GARDENS

MONDAY 17TH JUNE 2019

I/we would like ..... tickets at £70.00 each For parking at St Mary's Church, please add £5 .....

Please indicate any food allergies or intolerances here .....

Name (s) .....

Address .....

..... Telephone .....

Email (or send stamped self-addressed envelope).....

Please send cheque, payable to the 'Friends of the Holburne Museum' to: **MARK HAKE**, HOLBURNE FRIENDS, c/o THE HOLBURNE MUSEUM, GREAT PULTENEY STREET, BATH, BA2 4DB

**IMPORTANT:** PLEASE WRITE A **SEPARATE** CHEQUE + **SEPARATE** ENVELOPE FOR EACH EVENT, THANKS

**BOOKING FORM 6** DURHAM & NORTHUMBERLAND

19th-22nd SEPTEMBER 2019

I/we are interested in joining this trip ..... A brochure and full booking details will be sent to you in due course.

Please tick here if you would like a single room(s) ..... (supplement of £30 per room per night)

Name (s) .....

Address .....

..... Telephone .....

Email (or send stamped self-addressed envelope).....

Please send cheque, payable to the 'Friends of the Holburne Museum' to: **ANTONIA JOHNSON**, HOLBURNE FRIENDS, c/o THE HOLBURNE MUSEUM, GREAT PULTENEY STREET, BATH, BA2 4DB

Please note that, to reserve your place, a non-refundable deposit of £125 will be due by end of March