

Visiting the Holburne Museum



Summer 2022

Getting to the museum by car

We have a very small pay & display car park for Museum visitors.

There are a few disabled parking spaces for Blue Badge holders. Blue badge holders can park for free but make sure your blue badge is clearly displayed.

Otherwise there is a charge, and the car park is regularly checked by traffic wardens.

The car park machine only accepts coins.

Charges apply from 8am to 6pm daily.

Our gates are locked at 6pm.

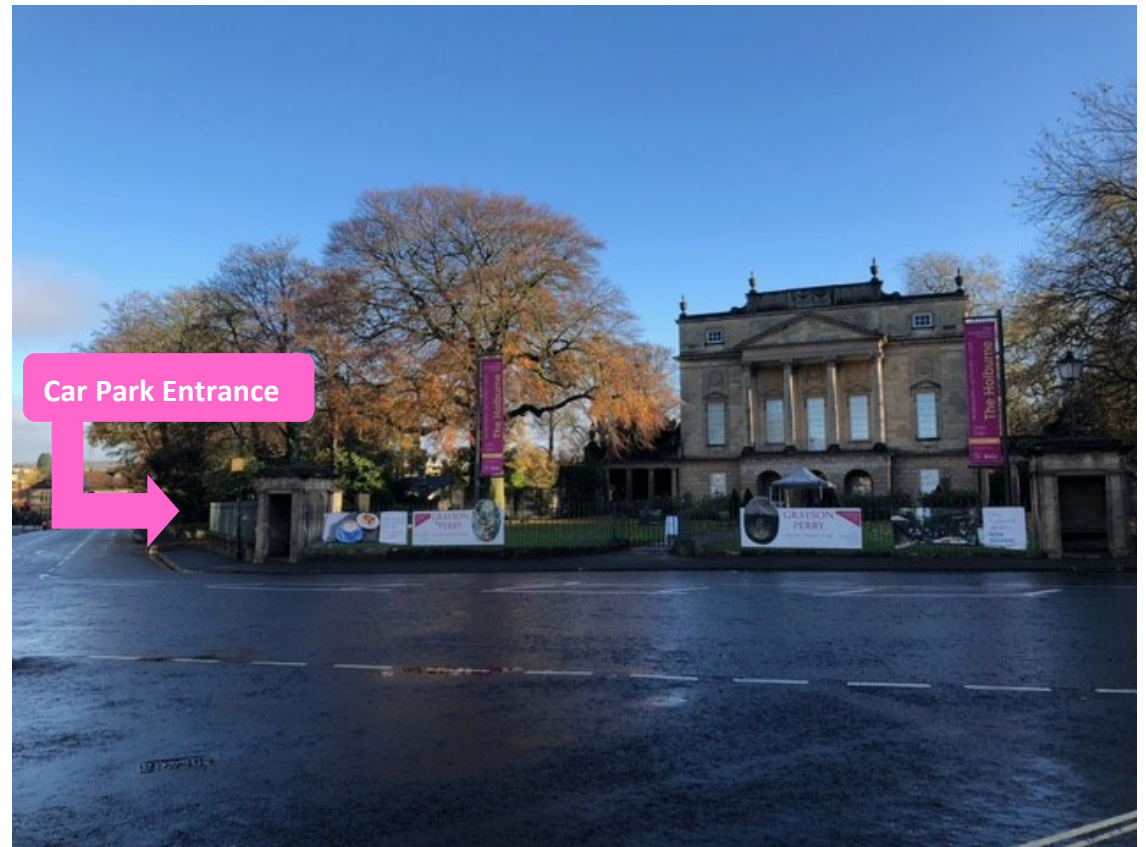
Up to 2 hours £3.50

2 to 3 hours £5

3 to 4 hours £7

4 to 6 hours £8.50

6 to 8 hours £10.50



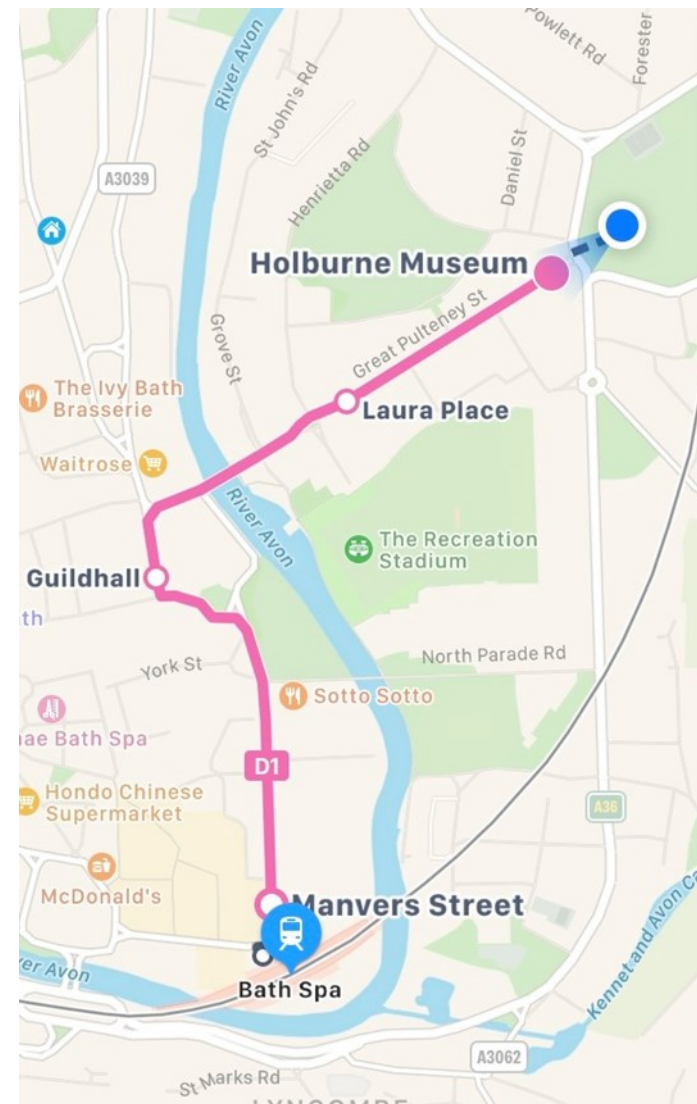
Getting to the museum by bus from the train station

The D1 starts from the Bus Station (next to the Railway Station). It can also be boarded opposite the Guildhall in the High Street. Get off at the Holburne Museum stop on Great Pulteney Street and cross the road to the Museum which is ahead of you.

To return find the bus stop on Great Pulteney Street, opposite where you got off earlier. This bus does not go to the Guildhall on its way back to the Bus Station so get off on North Parade or go all the way to the Bus Station.



Use this QR code to open google maps in your phone to get direction to the Holburne Museum



Getting to the museum on foot

We are a ten-minute walk from the centre of town along Great Pulteney Street, one of the most beautiful Georgian streets in the country. We are a 15-minute stroll from Bath Spa Train Station, through the historical city of Bath and down Great Pulteney Street towards Sydney Gardens.

Getting to the museum by bike

We have bike racks available in our garden and the cycle route along the canal is a wonderful way to reach us.

Getting to the museum by taxi

There is a taxi rank outside the train station, just ask them to take you to the Holburne Museum.

The number for Bath's local taxi company is

Abby V Cars – 01225 444444

If you are a wheelchair user and require a taxi Just4wheels have taxis available with a rear loading vehicle ramp. We would suggest booking this in advance.

01225 462693

07818417142

Just4wheelsbath@gmail.com

There are also other local taxi services that have accessible taxis please see link below.

<https://www.bathnes.gov.uk/services/business/taxis/taxis-disabled-access>

Inside the Museum

When you arrive, you will enter through these doors. They should be stood open however if it is a cold day, they may be closed but will open automatically for you when you approach.

You may have to join a queue. We will do our best to serve you as soon as possible.



Once you reach the front of the queue please wait to be called forward to the information desk.

If you pre booked your tickets now is a great time to get them ready for us to check.



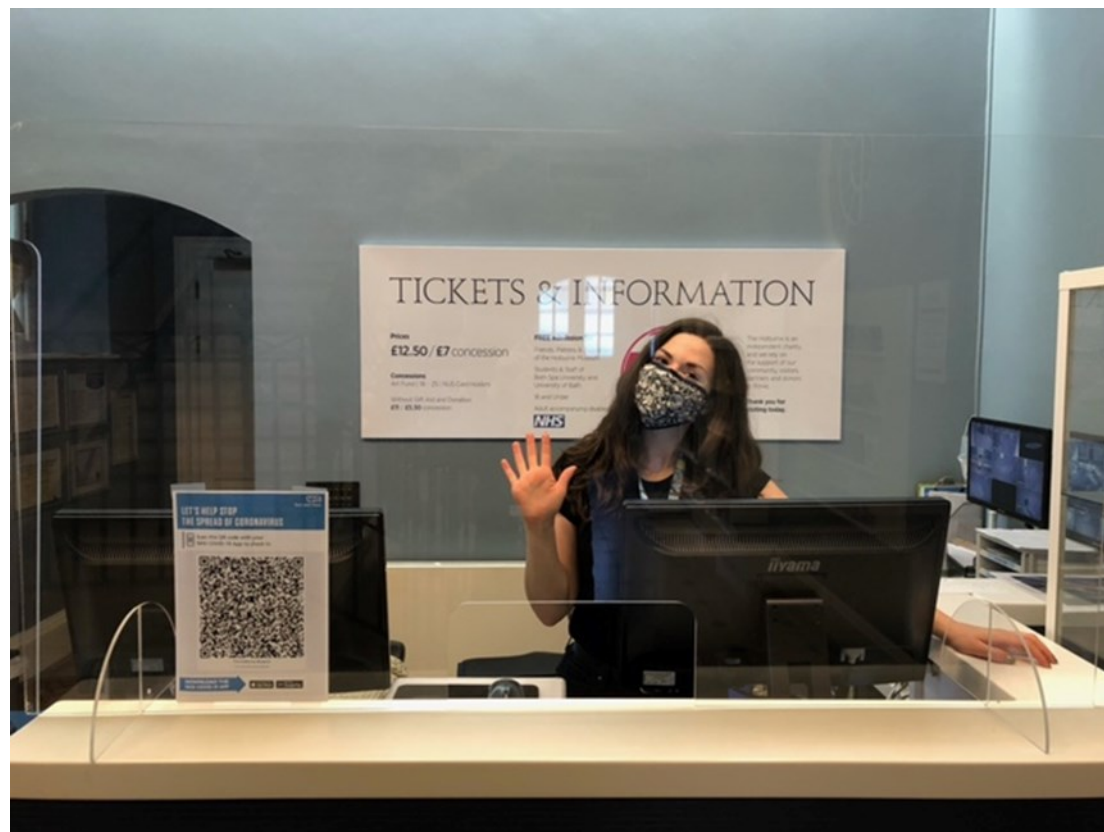
Once you are called forward, we can check or sell you tickets.

If you have a carer/companion accompanying you today they get a free ticket.

If you need us to remove face coverings we may be wearing so that you can lip read, please let us know. We also have a hearing loop at front desk so please switch you hearing aid to T.

We will also ask you if this is your first visit or if you are at the museum for a specific exhibition, this will determine where we suggest for you to begin your visit.

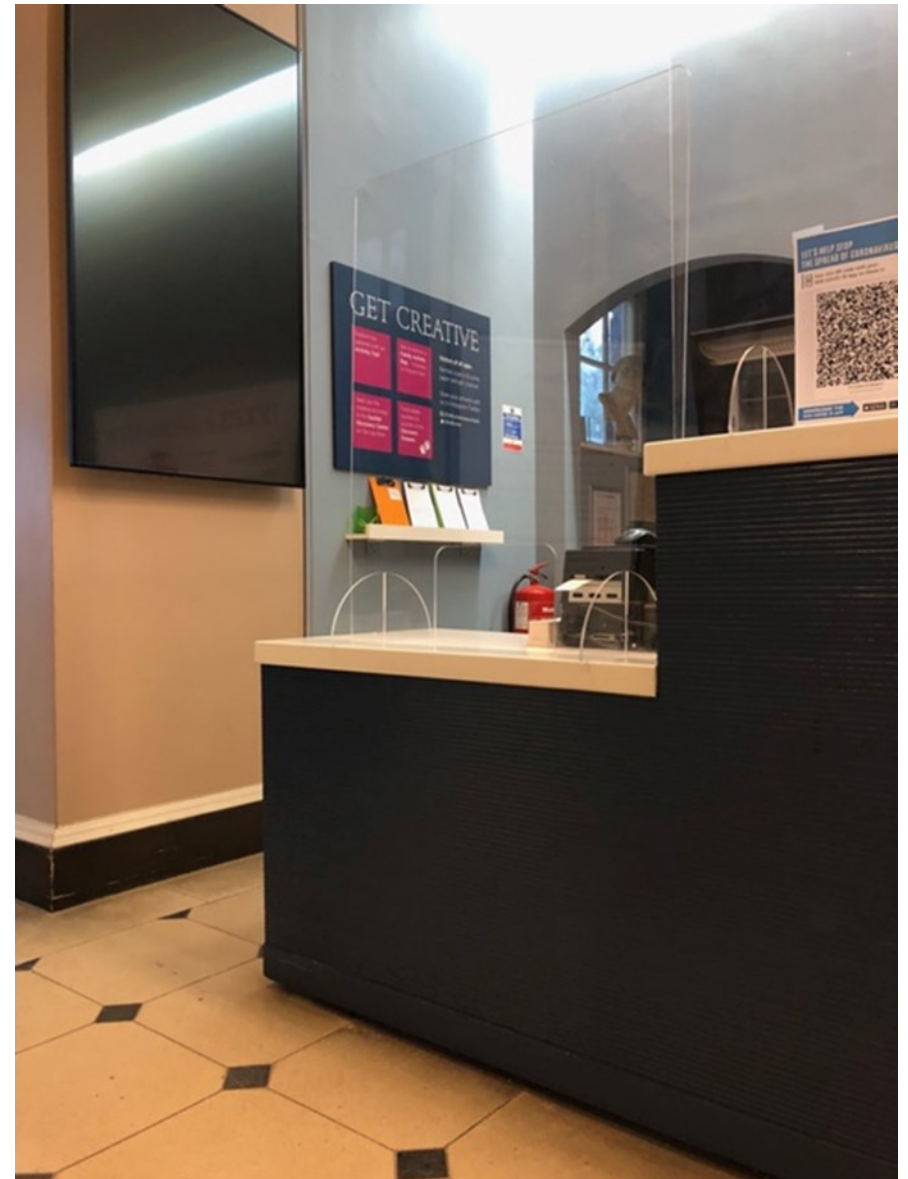
Toilets are available for your use at any time during your visit. Please see pages 18-19 for toilet information.



Part of the information desk is dropped for wheelchair users.

We do have a wheelchair for visitors use. We would suggest calling ahead to ensure it is available.

01225 388569



Beginning your visit

You will then either use the stairs or the lift to gain access to the museum.

The lift will take you to every floor of the museum.

The lift does have two glass sides and the buttons are located on the left hand side when you enter.



The stairs will also take you to every level of the museum.

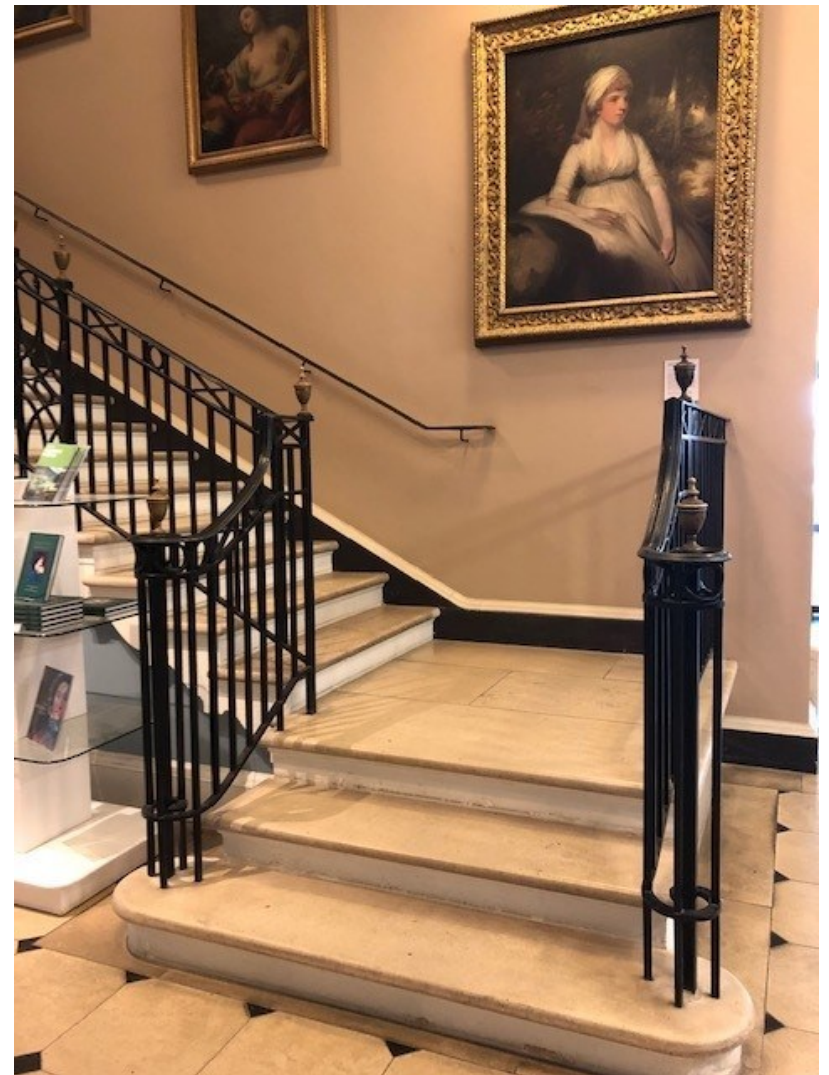
The number of steps between floors are as follows:

From the ground floor to 1st floor - 24

From the first floor the mezzanine - 16

From the 1st floor to 2nd floor - 28

From the basement to the ground floor -18



2nd floor

In The Ropper Gallery on the 2nd floor you will find David Hockney: Love Life drawings.

There is also a QR code you can scan with your smart phone for the exhibition text and we have large print on paper available, just ask the volunteer in the gallery and they can provide it to you.



2nd floor

Also on the 2nd floor you will find Marvellous Makers, Wondrous Worlds Raised Embroidery from the 17th century.

This gallery connects on to The Schroder Gallery which is hosting a long term loan of Northern Renaissance portraits.



2nd floor

Also on this floor you can find the Andrew Brownsword picture gallery.

This gallery also connects to The Schroder Gallery which is hosting a long term lone of Northern Renaissance portraits.



2nd floor

The Schroder Gallery which is hosting a long term
lone of Northern Renaissance portraits.

This gallery can be accessed both through the
Wirth gallery and the Brownsword Picture gallery



1st floor

On the 1st floor you can visit the Ballroom and permanent collection galleries.

As you enter in to the permanent collection there is had sanitiser by the door should you wish to use is at there exhibits you can interact with and touch in these galleries.

We also have magnify glasses we can provide you with as some of the things in this gallery are very small.

Also make sure you visit the mezzanine level of this gallery you can use the stairs or the lift.





The collection



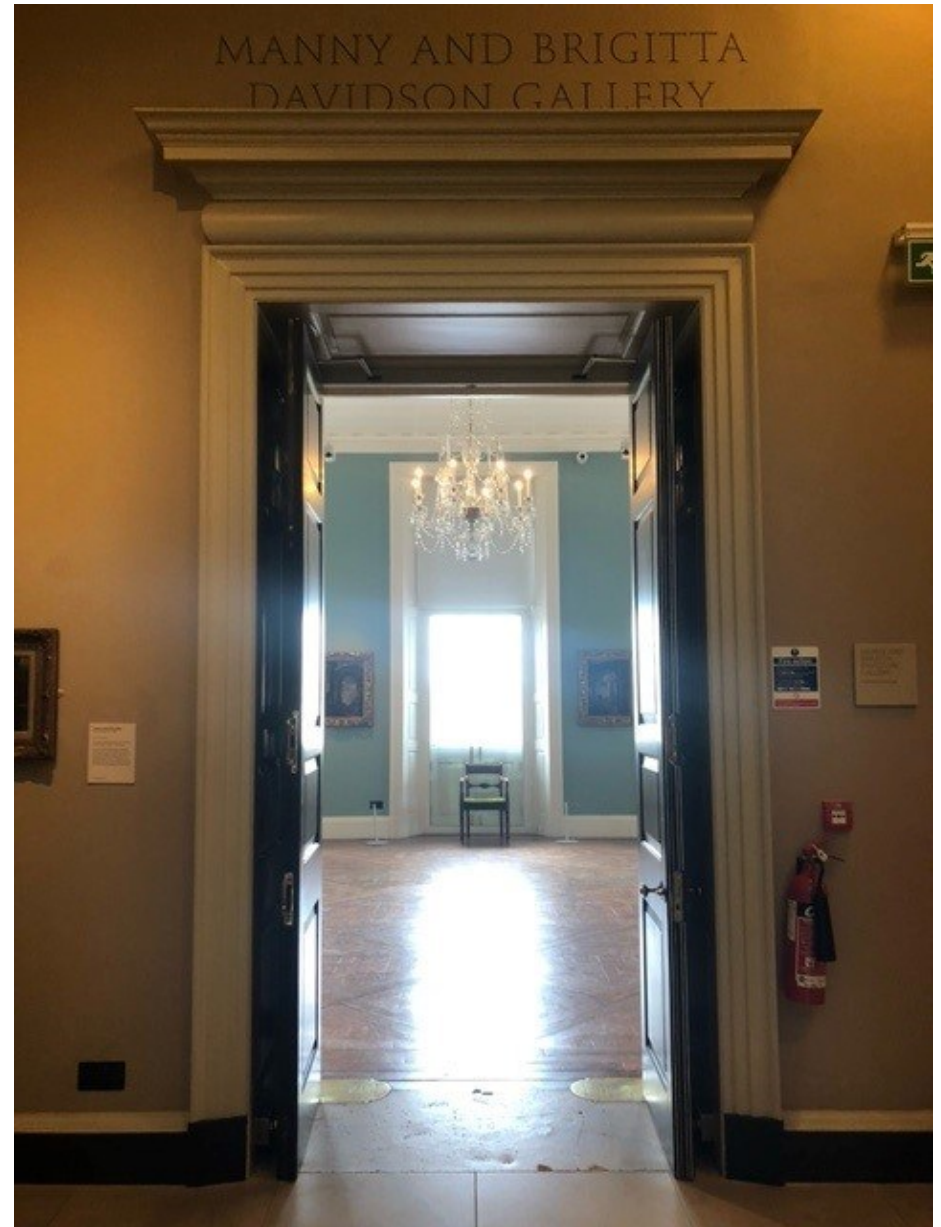
The collection mezzanine

1st floor

Also on the 1st floor you will find the Ballroom Gallery.

We don't currently have an exhibition in this gallery as we will be hosting event in this gallery over the summer.

Make sure to have a look in this gallery to admire the lovely view up Great Pulteney Street.



When you come back down to the ground floor you can visit the shop.



Also on the ground floor we have our space to make.

There are two art activities connected to the David Hockney exhibition.



Toilets

There is a disabled toilet on the ground floor by the exit.

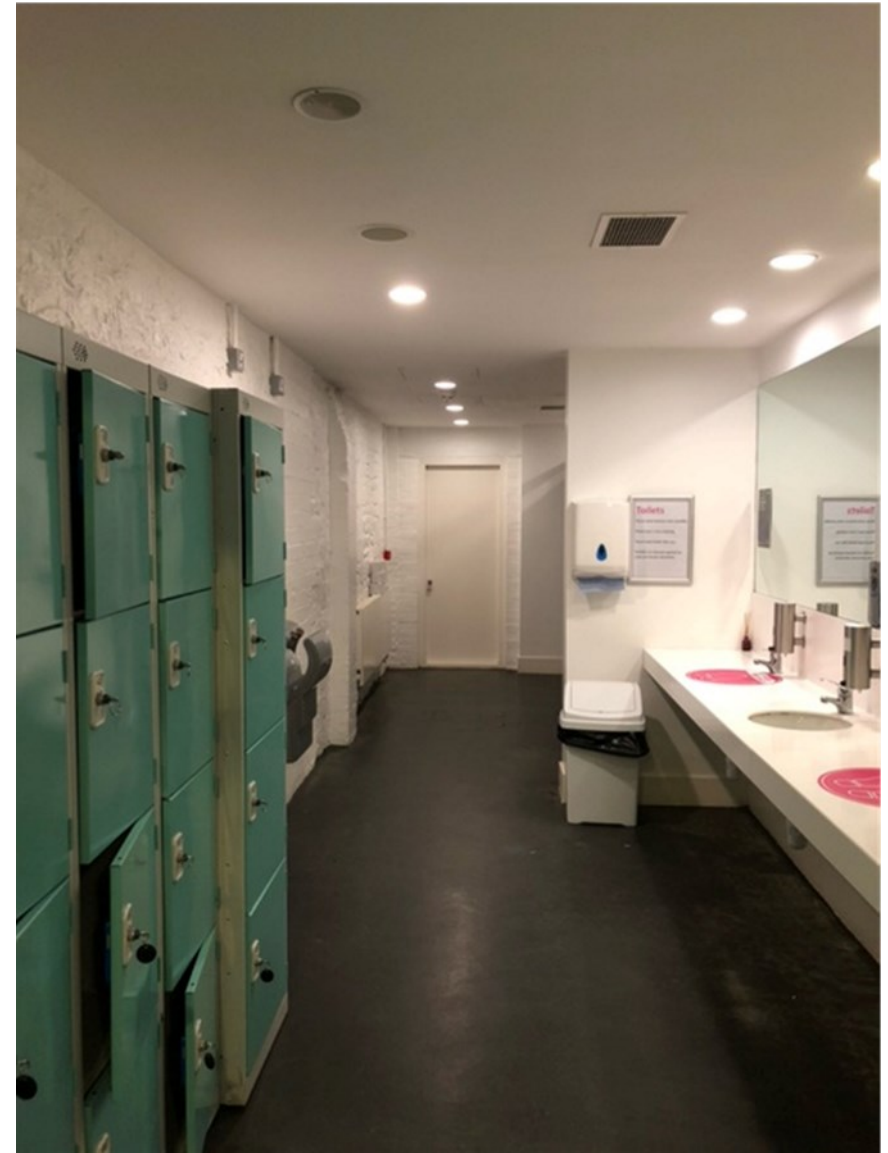
Or there are more toilets including baby changing downstairs in the basement.

It is 18 steps from the ground floor to the basement.



Toilets

You will find lockers in the toilets which are available for your use. They do require a £1 coin but you will get this back once you have finished with the locker.



The café is accessed via the glass double doors past the front desk or through the back doors that lead on to the terrace.

If you have any feedback or suggestions on this guide, please email.

enquiries@holburne.org

Also, if you have any further question related to you visit please give us a call on 01225 388569

Or email us at

enquiries@holburne.org

Museum layout

